

---

---

**VILLAGE OF SUGAR GROVE  
BOARD REPORT**

---

---

**TO:** VILLAGE PRESIDENT & BOARD OF TRUSTEES  
**FROM:** ANTHONY SPECIALE, DIRECTOR OF PUBLIC WORKS  
BRAD MERKEL, DEPUTY DIRECTOR OF PUBLIC WORKS  
**SUBJECT:** DISCUSSION: US30 AND MUNICIPAL DRIVE BIKE AND  
PEDESTRIAN CROSSING  
**AGENDA:** JULY 20, 2021 REGULAR BOARD MEETING  
**DATE:** JULY 14, 2021

---

**ISSUE**

Should the Village proceed with the installation of a bike path, a crosswalk and traffic signal improvements at US30 and Municipal Drive.

**DISCUSSION**

When Municipal Drive was constructed, the Village was not allowed to install a pedestrian crossing at US30 and Municipal Drive. With the gap in the bike path of approximately 960 feet and the lack of a pedestrian crossing signal at US30 this crossing creates a safety issue. Since that time with the development of additional housing and commercial establishments in the Village and the increased bike and pedestrian travel along Municipal Drive staff believes IDOT will allow a Pedestrian Crossing. However, we would need to apply for a permit from IDOT to proceed.

The estimated cost for the installation of a bike path, crosswalk and traffic signal improvements is \$165,775 including the engineering if this project is locally funded. If the project is locally funded, then we would probably just perform an intersection design study and then move forward with design and permitting.

Funding could be obtained from either Grants, TIF Funds or Capital Projects Fund Engineering that could be reallocated. The Village is currently pursuing a Grant Opportunity to offset the costs of this project. The estimate provided for the project do not assume that a Phase 1 will be required. If federal or state fund are utilized, a Phase 1 will likely be required which would add to both the schedule and budget.

**COST**

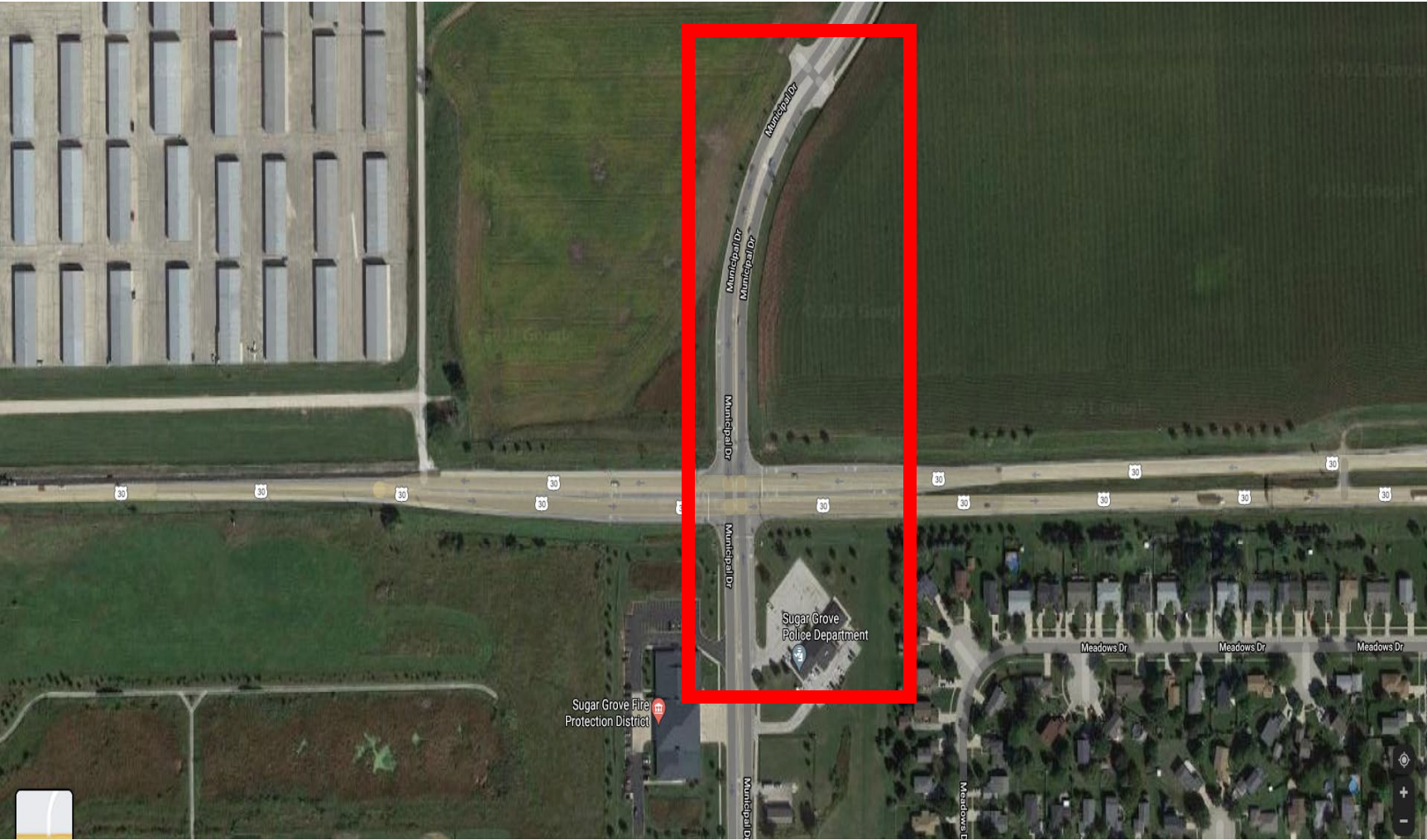
The estimated cost for the installation of a bike path, crosswalk and traffic signal improvements assuming local funds are used is \$165,775. If State or Federal Funds are used, that would add Phase I Engineering Costs of Approximately \$30,000 to the total project cost. This project is not budgeted but could use Funds

from the Capital Projects Funds (Account 35-53-6303 Engineering) that were budgeted for Engineering.

**RECOMMENDATION**

The Village Board discuss the installation of a bike path, a crosswalk and traffic signal improvements at US30 and Municipal Drive and direct staff to proceed with the project.

# US30 and Municipal Drive Crossing and Path Gap





<b>JOB NO:</b>	<b>SG2111</b>
<b>DESIGNED:</b>	
<b>DATE:</b>	<b>July 2, 2021</b>
<b>PROJECT TITLE:</b>	<b>US 30 &amp; Municipal Drive Pedestrian Crossing</b>

<b>Concept Cost Estimate</b>					
<b>ITEM NO.</b>	<b>ITEM</b>	<b>UNIT</b>	<b>QUANTITY</b>	<b>UNIT PRICE</b>	<b>AMOUNT</b>
1	NITROGEN FERTILIZER NUTRIENT	POUND	8.1	\$ 2.20	\$ 18
2	PHOSPHORUS FERTILIZER NUTRIENT	POUND	8.1	\$ 2.20	\$ 18
3	POTASSIUM FERTILIZER NUTRIENT	POUND	8.1	\$ 2.20	\$ 18
4	EARTH EXCAVATION	CU YD	250	\$ 20.00	\$ 5,000
5	TOPSOIL FURNISH AND PLACE, 6"	SQ YD	434	\$ 5	\$ 2,105
6	SEEDING, CLASS 2A	ACRE	0.09	\$ 2,200	\$ 198
7	EROSION CONTROL BLANKET	SQ YD	434	\$ 1	\$ 382
8	SUBBASE GRANULAR MATERIAL, TYPE B 6"	SQ YD	1,174.0	\$ 10.50	\$ 12,327
9	HOT-MIX ASPHALT SURFACE COURSE, IL-9.5, MIX "D", N50	TON	115	\$ 97	\$ 11,155
10	PORTLAND CEMENT CONCRETE SIDEWALK 5 INCH	SQ FT	400	\$ 7.00	\$ 2,800
11	DETECTABLE WARNINGS	SQ FT	80	\$ 25.00	\$ 2,000
12	COMBINATION CURB AND GUTTER REMOVAL	FOOT	84	\$ 8.00	\$ 672
13	MANHOLES TO BE ADJUSTED	EACH	2	\$ 600.00	\$ 1,200
14	COMBINATION CONCRETE CURB AND GUTTER, TYPE B-6.12	FOOT	84	\$ 104	\$ 8,718
15	SIGN PANEL- TYPE 1	SQ FT	8.1	\$ 43	\$ 350
16	THERMOPLASTIC PAVEMENT MARKING- LINE 6"	FOOT	231	\$ 1.20	\$ 277
17	UNDERGROUND CONDUIT, GALVANIZED STEEL, 2 1/2" DIA	FOOT	240	\$ 33.00	\$ 7,920
18	CONCRETE FOUNDATION, TYPE A	FOOT	8	\$ 250.00	\$ 2,000
19	PEDESTRAIN SIGNAL HEAD, LED, 1-FACE, BRACKET MOUNTED WITH COUNTDOWN TIMER	EACH	2	\$ 351	\$ 701
20	PEDESTRIAN PUSH-BUTTON	EACH	2	\$ 238	\$ 477
21	RELOCATE EXISTING TRAFFIC SIGNAL CONTROLLER AND CABINET, COMPLETE	EACH	1	\$ 2,922	\$ 2,922
22	PEDESTRIAN SIGNAL POST, 10 FT.	EACH	2	\$ 847.00	\$ 1,694
23	TRAFFIC CONTROL AND PROTECTION, (SPECIAL)	L SUM	1	\$ 10,000.00	\$ 10,000
24	HANDHOLE TO BE ADJUSTED	EACH	2	\$ 1,486	\$ 2,973
25	PEDESTRIAN PUSH-BUTTON POST, TYPE A	EACH	2	\$ 915	\$ 1,830
26	MODIFY EXISTING CONTROLLER AND CABINET	EACH	1	\$ 3,450	\$ 3,450
27	RELOCATE EXISTING HANDHOLE	EACH	2	\$ 2,500	\$ 5,000
28	CONSTRUCTION LAYOUT	L SUM	1	\$ 2,500	\$ 2,500
29	RE-OPTIMIZE TRAFFIC SIGNAL SYSTEM LEVEL 1	EACH	1	\$ 1,100	\$ 1,100
<b>SUBTOTAL</b>					\$ 89,802
<b>CONTINGENCY (30%)</b>					\$ 26,941
<b>TOTAL</b>					\$ 116,743
<b>TOTAL + 3% INFLATION</b>					\$ 120,245
<b>PRELIMINARY ENGINEERING (12%)</b>					\$ 14,009
<b>DESIGN ENGINEERING (12%)</b>					\$ 14,009
<b>CONSTRUCTION ENGINEERING (15%)</b>					\$ 17,511
<b>TOTAL PRELIMINARY COST ESTIMATE</b>					<b>\$ 165,775</b>

Engineering fees assume local funds will be utilized.

ITEM				UNIT	
NO.	ITEM	UNIT	QUANTITY	PRICE	AMOUNT

09/12