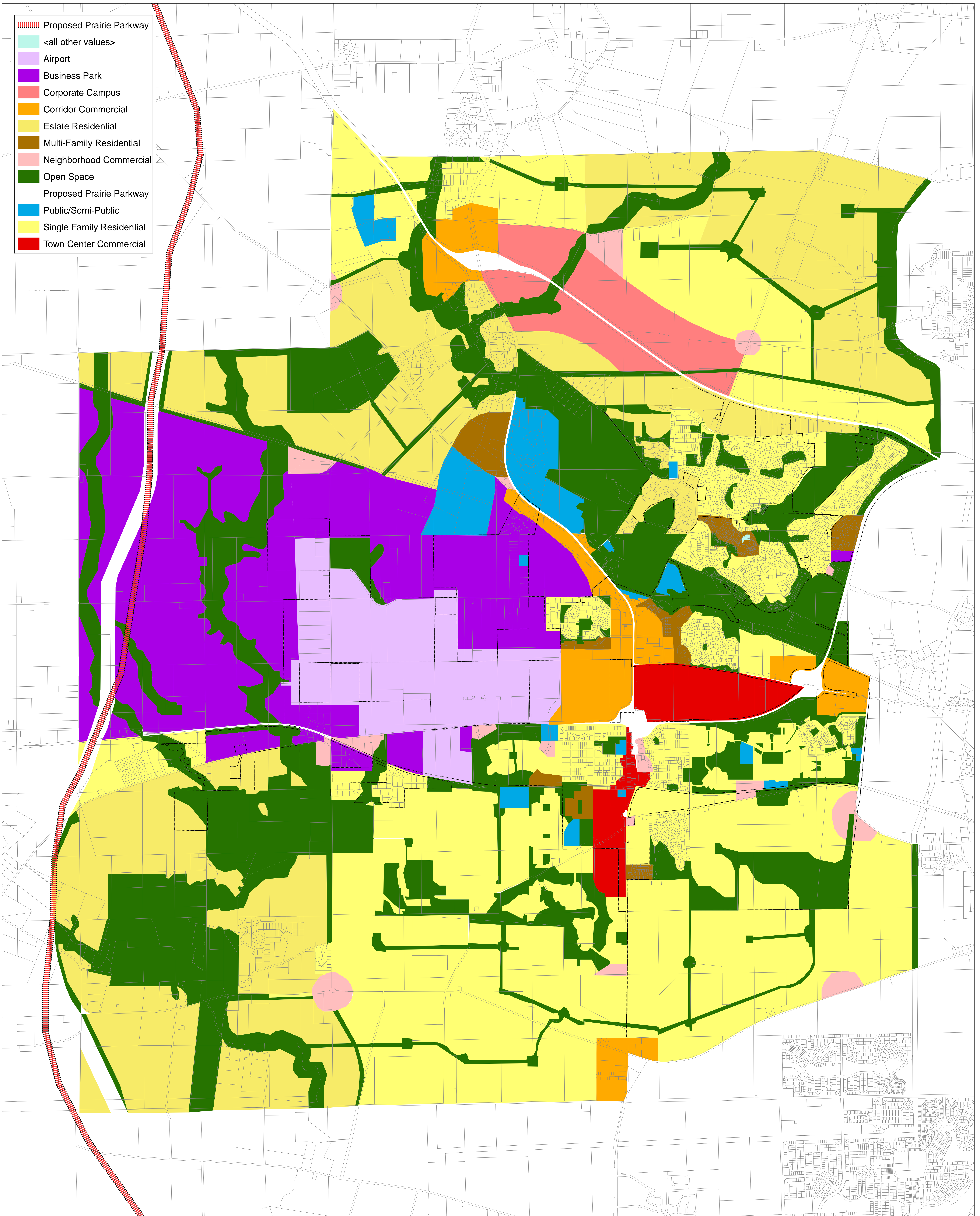




Summary of Land Use Areas
 Comprehensive Plan / Future Land Use Map

July 27, 2007

<u>Land Use Description</u>	<u>Area (mi²)</u>	<u>Percentage</u>	<u>Area (Acres)</u>
Airport	2.09	4.7%	1,339
Business Park	5.12	11.5%	3,280
Corporate Campus	1.12	2.5%	719
Corridor Commercial	1.31	3.0%	841
Estate Residential	8.63	19.4%	5,523
Multi-Family Residential	0.51	1.2%	327
Neighborhood Commercial	0.56	1.3%	361
Open Space	10.09	22.7%	6,455
Proposed Prairie Parkway	0.75	1.7%	477
Public/Semi-Public	0.91	2.1%	585
Single Family Residential	12.65	28.4%	8,097
Town Center Commercial	0.75	1.7%	479
<i>Total Area</i>	<i>44.50</i>		<i>28,482</i>



**Comprehensive Plan / Future Landuse Map
Village of Sugar Grove, Illinois**

July 2007